
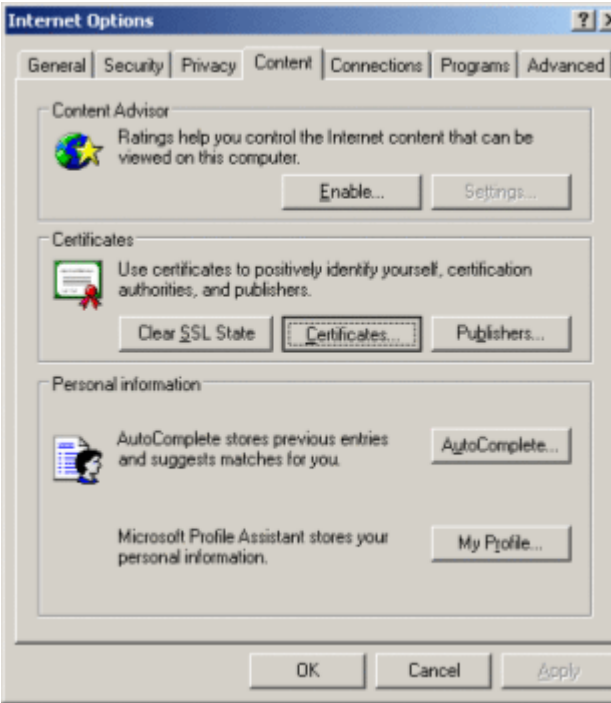
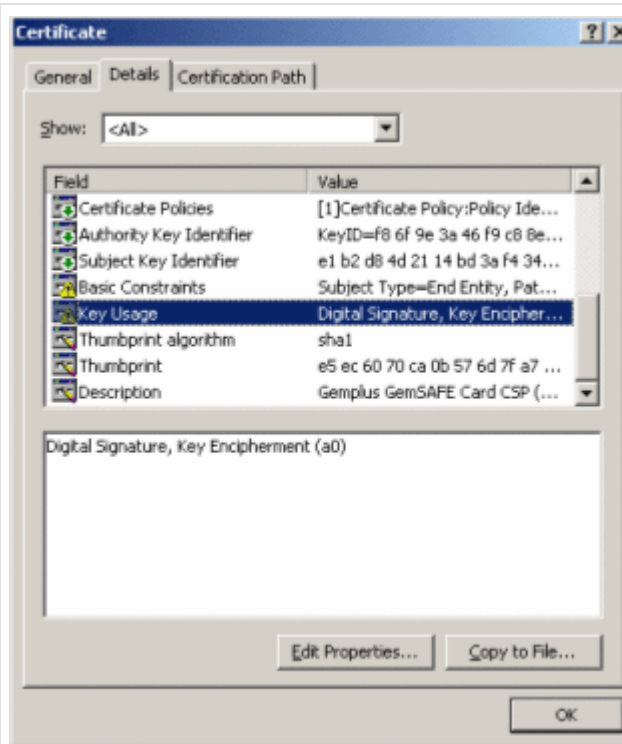
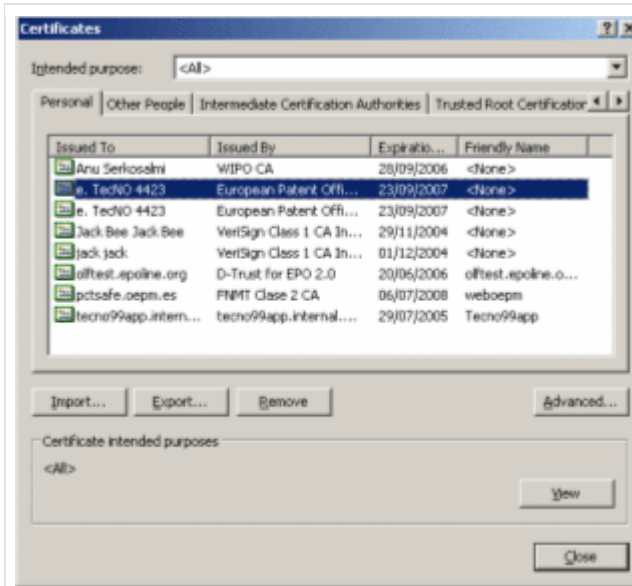


Extracting a Smart Card Certificate Using Internet Explorer

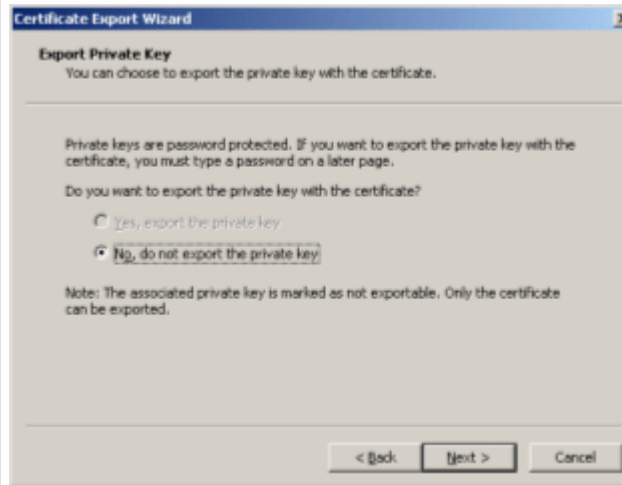
Make sure your smart card is inserted in the reader, and the green light is turned on.

| EXTRACTING A SMART CARD CERTIFICATE USING INTERNET EXPLORER | |
|--|--|
| <p>Open Internet Explorer and go to Internet Options:</p>  | <p>Go to the Content tab and click Certificates:</p>  |
| <p>Double-click on the personal certificate (the first "e. TecNO 4423" in this example):</p> | <p>In the Details tab make sure that Key Usage is Digital Signature and not Non-Repudiation, then click Copy to File:</p> |



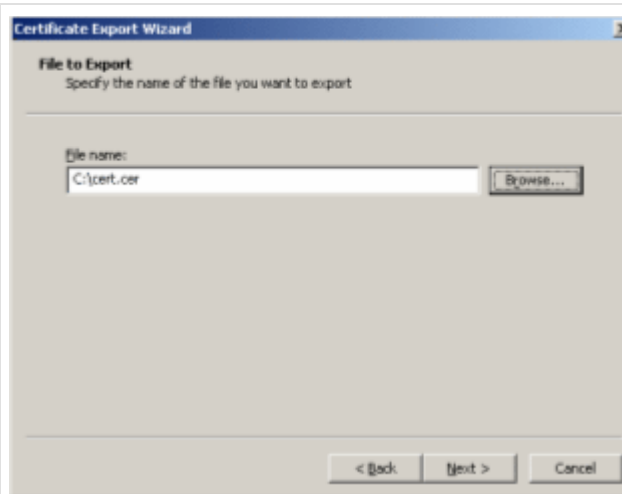
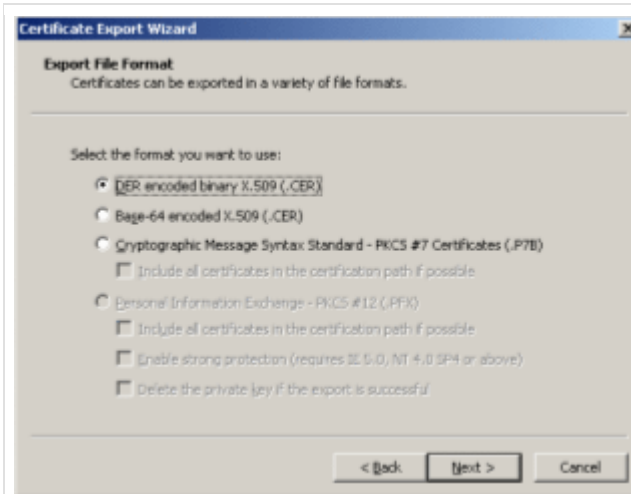
Click **Next**:

Click **Next**:

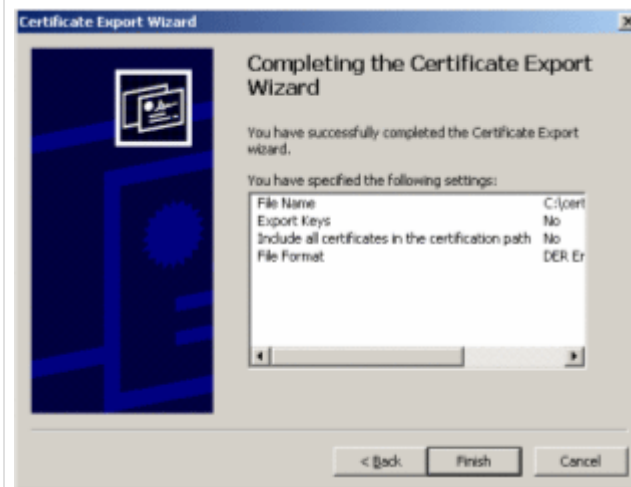


Click **Next**:

Click **Browse**, choose a name and location to save:



Click **Finish** to export:



Click **OK** to complete:

